

## 5.1.2 Available student support facilities in the institution

The Institute provides a lot of facilities and physical support to the students as follows :

### 1. Vehicle parking

Total no. of parking space for two-wheeler/cycle

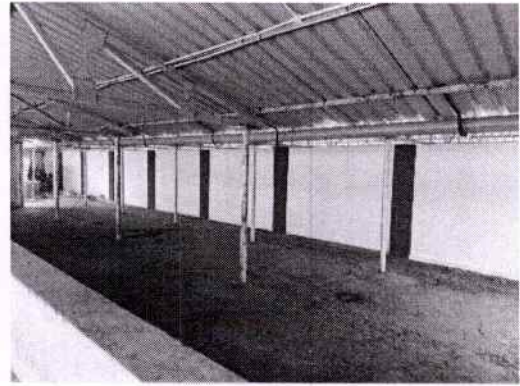
Sl. No.	Name of the Area	Capacity (in nos.)	Used Regularly	Area (in meters)
1	Infront of Institute (parking space- 1)	100	100	135.68 sqm <sup>2</sup>
2	Open parking area of institute – science gate (Parking space – 3)	25	25	108.78 sqm <sup>2</sup>
3	Parking area of DMS- 1 (Cycle) – DMS parking space 1	100	100	106.8 sqm <sup>2</sup>
4	Parking area of DMS – 2 (Cycle) – DMS parking space 2	75	75	105 sqm <sup>2</sup>
5	Parking area of DMS- 3 (Cycle) – DMS parking space 3	100	100	125.58 sqm <sup>2</sup>
6	Parking area of DMS- 4 (Cycle) – DMS parking space 4	30	30	138 sqm <sup>2</sup>



*[Handwritten signature]*

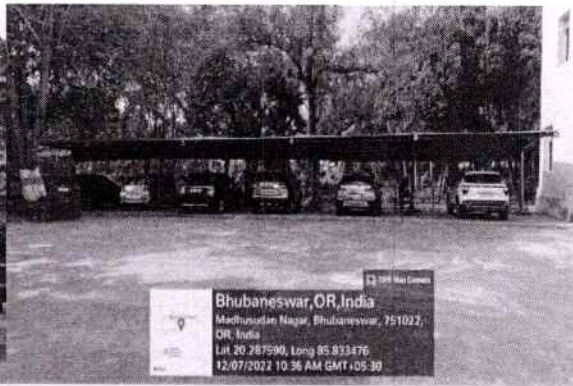
*[Handwritten signature]*  
**Coordinator**  
 आंतरिक गुणवत्ता आश्वासन प्रकोष्ठ  
 Internal Quality Assurance Cell  
 क्षेत्रीय शिक्षा संस्थान, भुवनेश्वर  
 Regional Institute of Education, Bhubaneswar

*[Handwritten signature]*  
**प्राचार्य/ PRINCIPAL**  
 क्षेत्रीय शिक्षा संस्थान  
 Regional Institute of Education  
 भुवनेश्वर / Bhubaneswar-751022



Total number of parking space for cars and 4 wheelers, etc.

Sl. No.	Name of the area	Capacity	Used Regularly	Area
1	Infront of institute parking shade (Parking space 2)	10	10	195.84 sqm <sup>2</sup>
2	D.M. School car parking area – 5 (DMS parking Space 5)	10	10	197.8 sqm <sup>2</sup>



Total Number of Parking Space for Disabled Person

Sl. No.	Name of the area	Capacity	Used Regularly	Area
1	Infront of institute parking shade	1	1	19.2 sqm <sup>2</sup>
2	D.M. School car parking	1	1	13.8 sqm <sup>2</sup>



## 2. Common Room

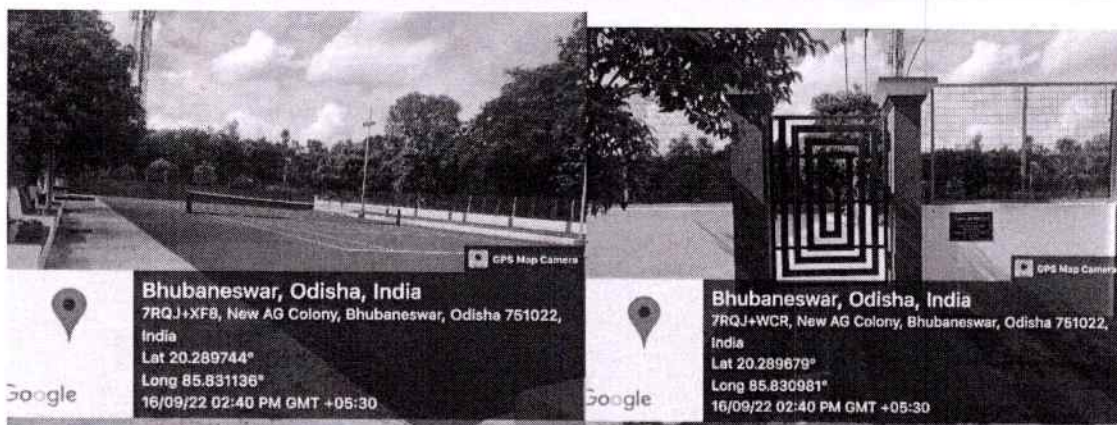
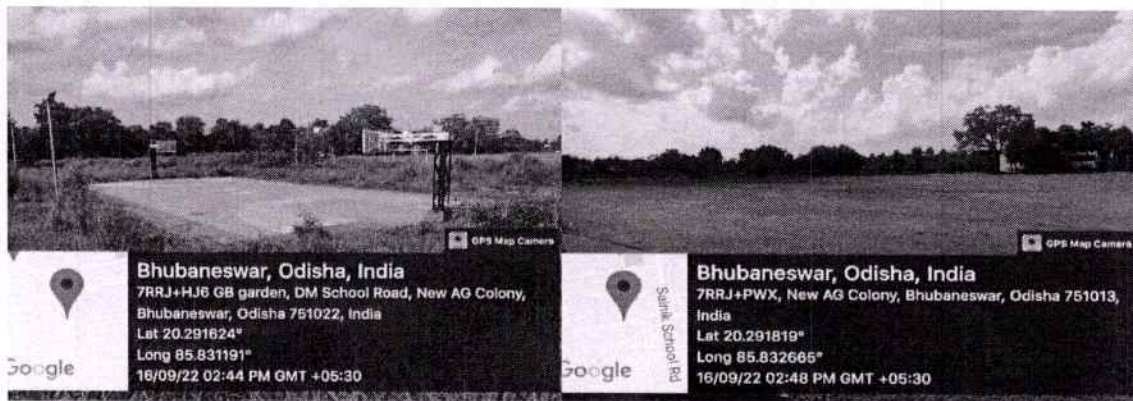
SI No	Common Room	Number	Furniture and Other Accessories	Recreational Materials
1	Boys Common Room	1	Bed with accessories like chair and table	Carrom board, Chess board, Newspaper, Magazine
2	Girls Common Room	1	Sanitation 3 Tables, 3 Benches, Napkin vending machine, Napkin burning machine	Carrom board, Chess board, Newspaper, Magazine



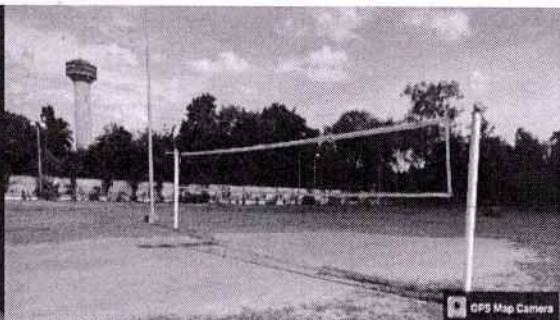
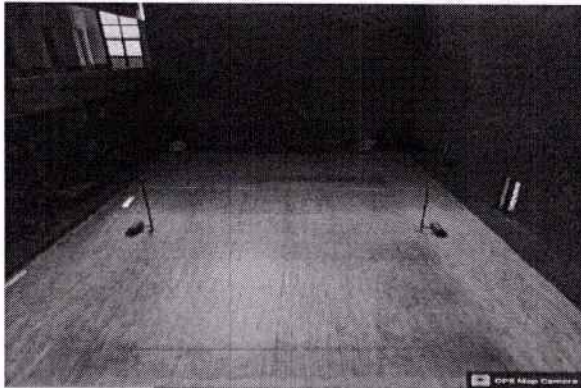


### 3. Recreational Facility

Sl no.	Name of the recreational facility (place)	Area
1.	Play ground	9.85 in acres
	<ul style="list-style-type: none"> <li>• Basketball court/ ground</li> <li>• Main play ground</li> <li>• Badminton court</li> <li>• Lawn tennis court</li> <li>• Volley ball court</li> </ul>	
2.	Botanical garden	3102 sqm <sup>2</sup>
3.	Children's Park	3870 sqm <sup>2</sup>
4.	Plantation, garden and other vegetation	38. 19 in acres







**Bhubaneswar, Odisha, India**  
7RPM+WC5, New AG Colony, Bhubaneswar,  
Odisha 751022, India  
Lat 20.287201°  
Long 85.833512°  
16/09/22 03:04 PM GMT +05:30

region  
**Bhubaneswar, Odisha, India**  
7RRM+X99, New AG Colony, Bhubaneswar, Odisha 751022,  
India  
Lat 20.292434°  
Long 85.833026°  
16/09/22 02:51 PM GMT +05:30

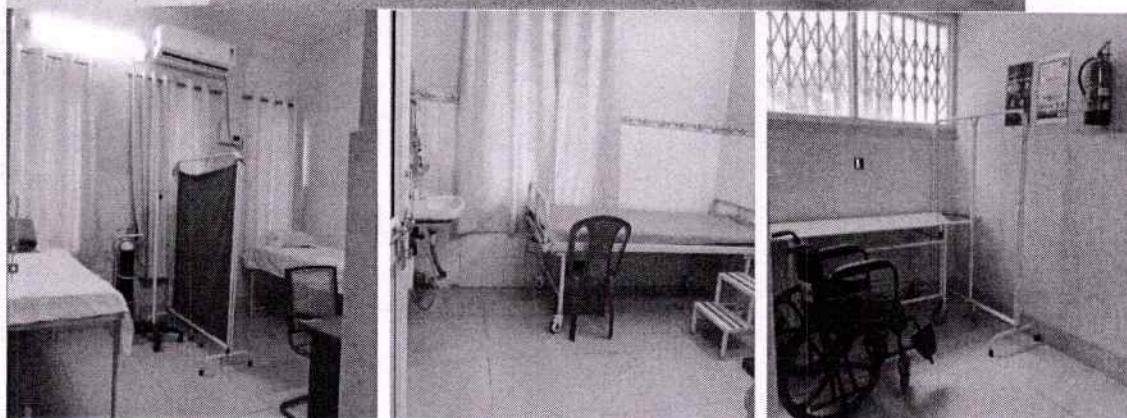
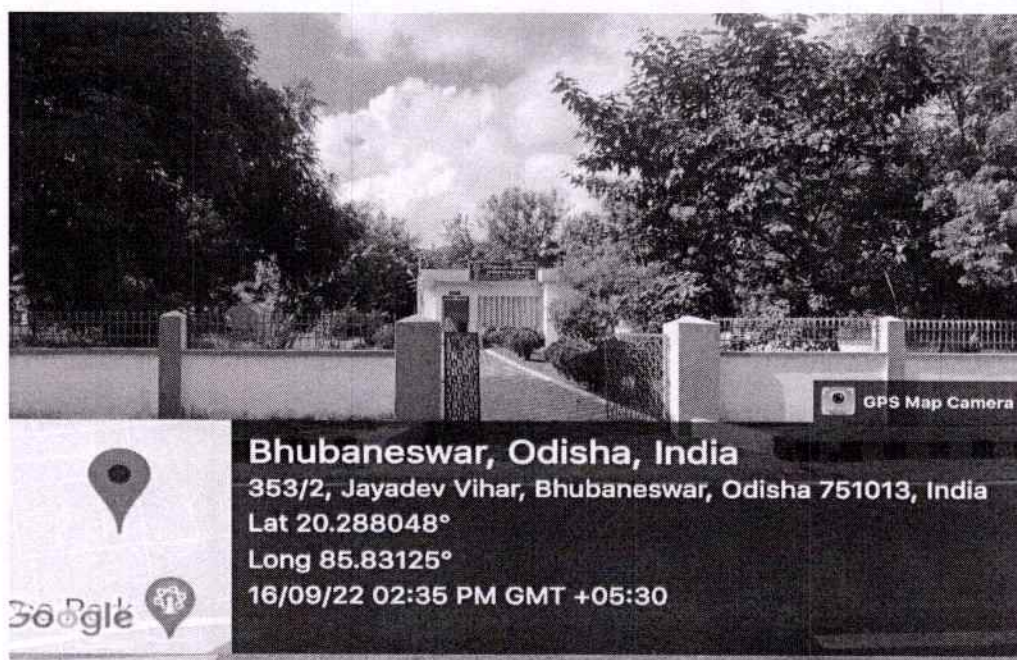




#### 4. First aid and medical aid

Sl. No.	Dispensary	Area	Opening and Closing Time	Number of Humanresources	Number of Beds	Number of Wheel Chair	Medicine/ Equipment Available
1	1	663 sqm <sup>2</sup>	9am to 5:30pm	2 Doctors, 2 Pharmacist 1 attendant	3	4	More than 90 types of available

First-aid kits are available in the hostel



*(Institute Dispensary Outside and Inside)*

OTHER CHARGES (2021-22): Total Allocation : Rs.700.38 Lakh

SL. NO	HEAD	Allocation 2021-22 (Rs. In Lakh)	Remarks
1	Miscellaneous	235.38	
2	Water	20.00	
3	Electricity	60.00	
4	Library	20.00	
5	Hindi Fort-night	1.00	
6	Stationery	10.00	
7	Welfare	10.00	
8	Postage	1.00	
9	D.M. School	5.00	
10	New Guest House	2.00	
11	Liveries	2.00	
12	Printing and Binding	3.00	
13	Petrol & Mobil	0.50	
14	Telephone	3.00	
15	Vehicle Maintenance	0.50	
16	DWE-DE	3.00	
17	DWE-DESM	5.00	
18	DWE-DESSH	0.30	
19	Medicine	3.50	
20	Entertainment and Hospitality	0.20	
21	TA/DA/MC/DPC/SC	3.00	
22	Student Act & Welfare	10.00	
23	Rent/Rates/Taxes	2.00	
24	Security Agency	150.00	
25	House Keeping Agency	100.00	
26	LDC Agency	50.00	
	<b>TOTAL</b>	<b>700.38</b>	

  
 31/8/21  
 I/c ACCOUNTS OFFICER



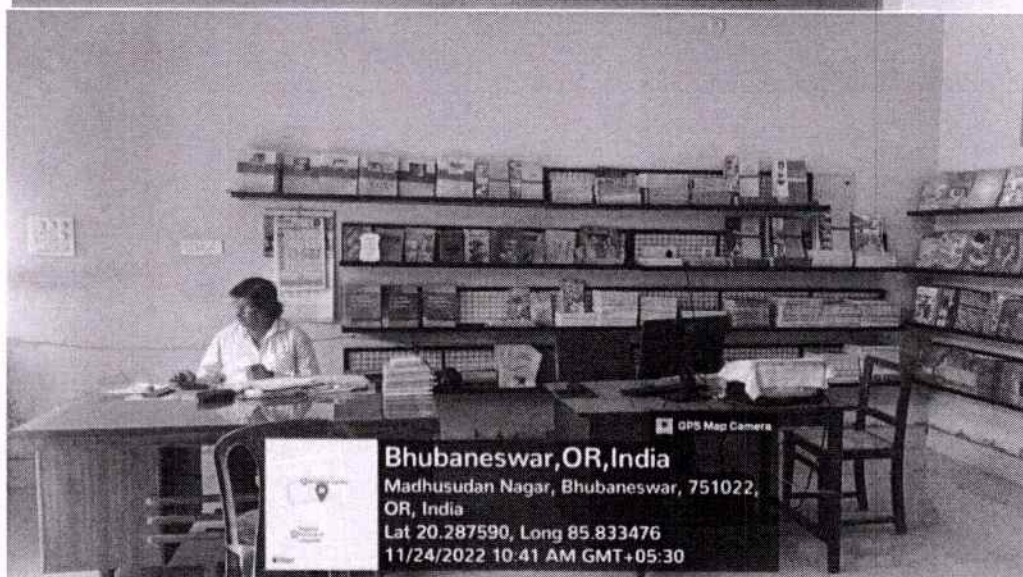
5. Transport: - Institute has hostel capacity for all the students so it is completely residential. However, during need of emergency institute vehicle (official car) is used for transport purpose.



#### 6. Book Bank

<i>Subjects</i>	<i>No. of books</i>
i. Education	155
ii. Science	354
iii. Social science	416
iv. Literature	412
<b>Total no. of books</b>	<b>1337</b>

However, in the main library we have 82,000 books in total.

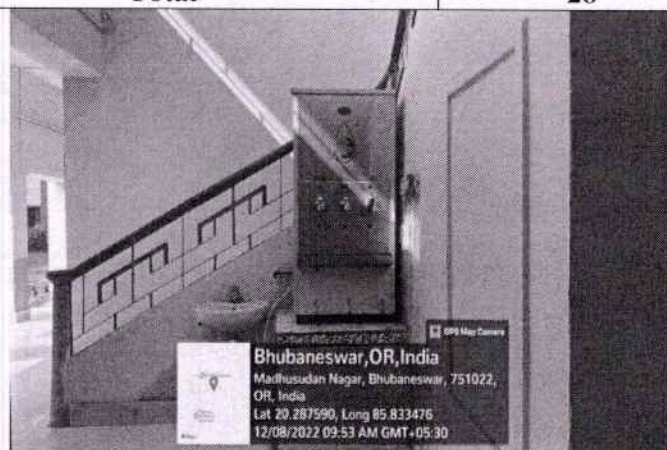




### 7. Safe Drinking Water

The institute has provision of supplying drinking water by installing water- purifier across the campus at desired places.

<i>Sl. No</i>	<i>Description</i>	<i>No. of purifier</i>	<i>Expenditure</i>
1	Academic building	7	8,49,931/- (expenditure for water purifier including CAMC)
2	Canteen	1	
3	Hostels	12	
4	Dispensary	1	
5	D.M. School	6	
6	New Guest House and Sarojini Hostel	3	
	<b>Total</b>	<b>28</b>	



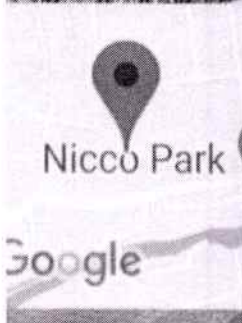
### 8. Hostel- There are 5 hostels available for student accommodation.

<i>Sl no.</i>	<i>Name of the hostel</i>	<i>Hostel Campus area</i>	<i>floor</i>	<i>rooms</i>	<i>Students capacity</i>
1.	Homibhaba Hostel	8277 sq m	3(G, 1st, 2nd)	111	330
2.	Gopabanbhu Hostel	8277 sq m	3(G, 1 <sup>st</sup> , 2 <sup>nd</sup> )	111	330
3.	Ashutosh Hostel	7020 sq m	2(G, 1 <sup>st</sup> )	53	150
4.	Ramanujan Hostel	7455 sq m	2(G, 1 <sup>st</sup> )	52	150
5.	Laxmibai Hostel	5917 sq m	4(G, 1 <sup>st</sup> , 2 <sup>nd</sup> , 3 <sup>rd</sup> )	108	216
Total	5	36,946sq m		435	1176





GPS Map Camera



**Bhubaneswar, Odisha, India**

7RPH+JXJ, Old Nayapalli, New AG Colony, Bhubaneswar,  
Odisha 751022, India

Lat 20.2867°

Long 85.829938°

16/09/22 02:37 PM GMT +05:30



GPS Map Camera



**Bhubaneswar, Odisha, India**

584, Nicco Park Rd, Unit 4, Madhusudan Nagar,  
Bhubaneswar, Odisha 751012, India

Lat 20.287741°

Long 85.830433°

16/09/22 02:36 PM GMT +05:30





GPS Map Camera



**Bhubaneswar, Odisha, India**  
**New AG Colony, Bhubaneswar, Odisha, India**  
Lat 20.287594°  
Long 85.833454°  
16/09/22 02:43 PM GMT +05:30



GPS Map Camera



**Bhubaneswar, Odisha, India**  
**7RRJ+HJ6 GB garden, DM School Road, New AG Colony,**  
**Bhubaneswar, Odisha 751022, India**  
Lat 20.291742°  
Long 85.8315°  
16/09/22 02:46 PM GMT +05:30





GPS Map Camera



**Bhubaneswar, Odisha, India**

7RRJ+HJ6 GB garden, DM School Road, New AG Colony,  
Bhubaneswar, Odisha 751022, India  
Lat 20.291742°  
Long 85.8315°  
16/09/22 02:46 PM GMT +05:30



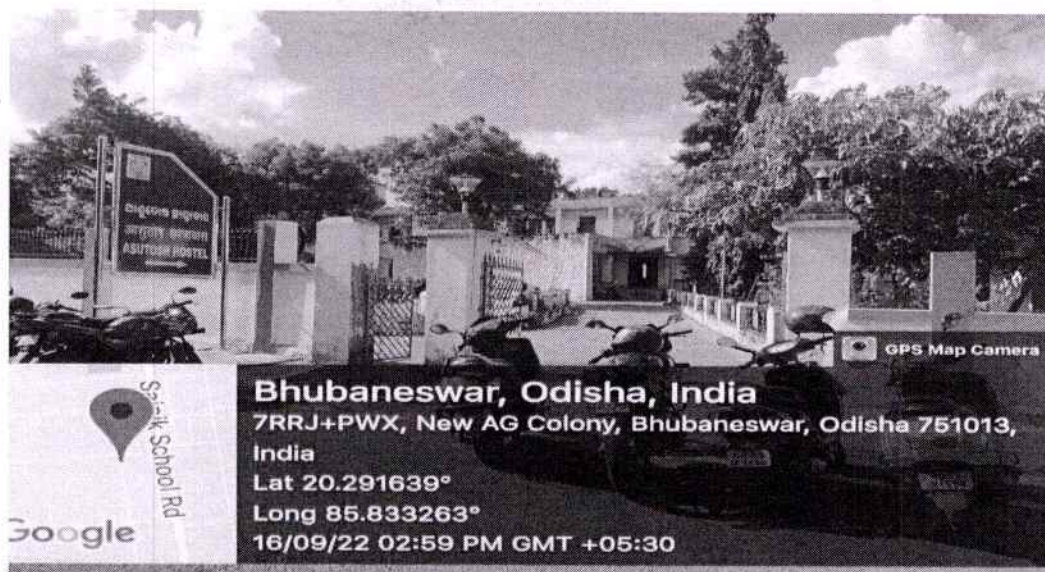
GPS Map Camera



**Bhubaneswar, Odisha, India**

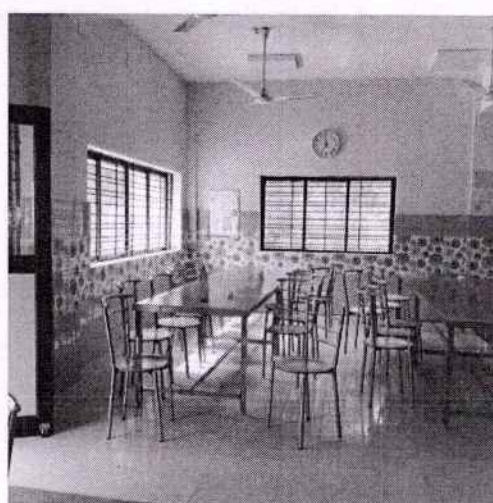
7RRJ+WXG, Anand Bazar, New AG Colony, Bhubaneswar,  
Odisha 751022, India  
Lat 20.292506°  
Long 85.832523°  
16/09/22 02:49 PM GMT +05:30





9. **Canteen** - Open and well spacious canteen is available for students and faculties.

Canteen	Area	Furniture	Seating Capacity	Other Accessories
1. Canteen Building	34m x 17m= 578 sqm	81 tables	60 persons	Ladies' toilet, gent's toilet, kitchen store and drinking space, Water cooler, connection of solar light, biogas system o use waste food, green waste vegetables, etc.
2. Open space of the canteen				





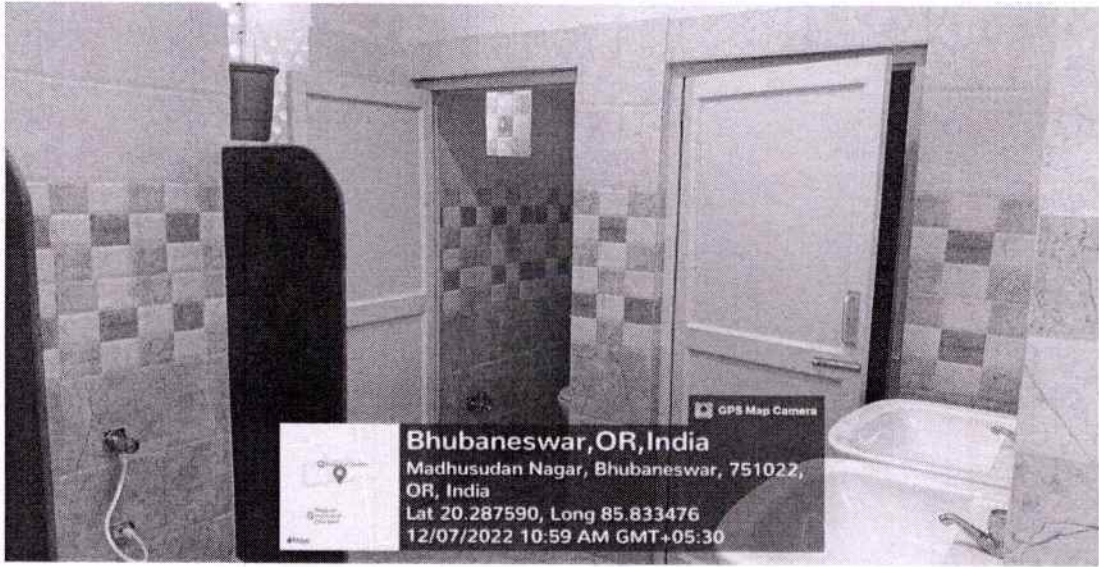
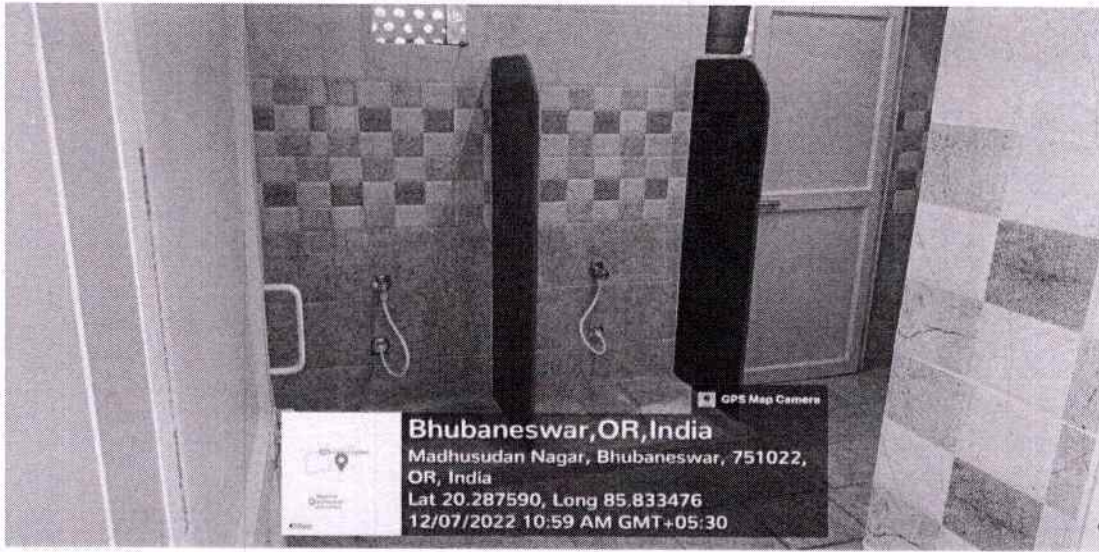


10. **Toilets for girls-** The institute has 22 numbers of toilets including 08 toilets especially for girls.

No. of toilets and washroom in R.I.E campus

<i>Sl. No</i>	<i>Description</i>	<i>No. of washroom</i>
1	Academic building	18
2	Canteen	2
3	Dispensary	2
4	Girls toilets	8





*[Handwritten Signature]*  
समन्वयक  
Coordinator  
आंतरिक गुणवत्ता आश्वासन कोष्ठ  
Internal Quality Assurance Cell  
क्षेत्रीय शिक्षा संस्थान  
Regional Institute of Education

*[Handwritten Signature]*  
प्राचार्य/ PRINCIPAL  
क्षेत्रीय शिक्षा संस्थान  
Regional Institute of Education  
भुवनेश्वर/ Bhubaneswar-751022